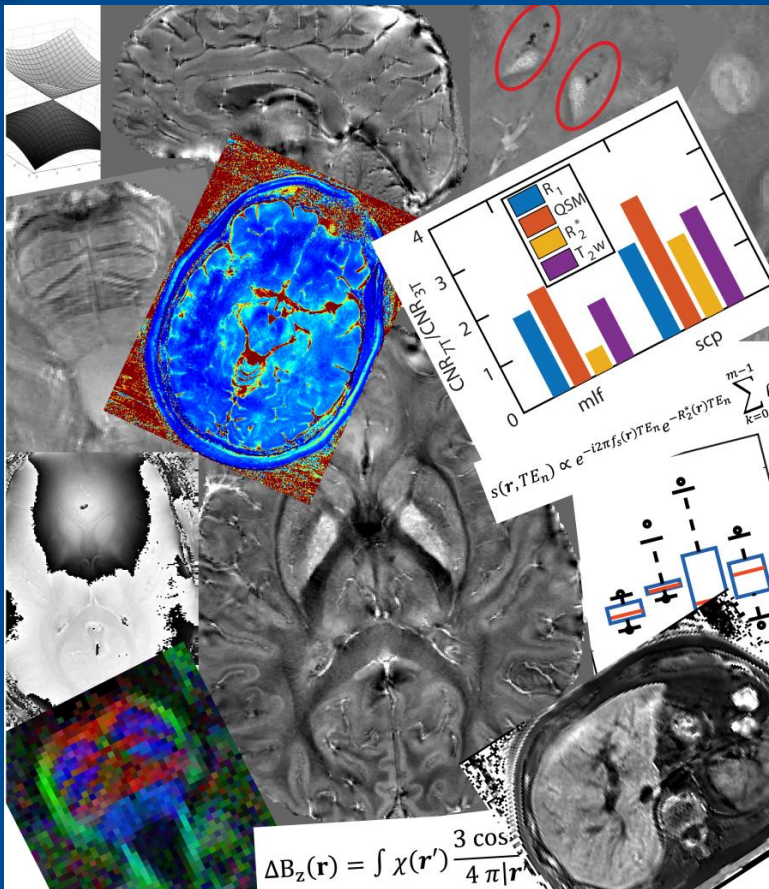


Write your Master or Bachelor Thesis in the Susceptibility Mapping Group at the DKFZ!



Projects in the Susceptibility Mapping Group aim at new developments and applications in the context of susceptibility mapping and include:

- Image reconstruction,
- Fat-water separation,
- Quantitative MRI methods such as T_2 mapping,
- Segmentation methods,
- Susceptibility mapping in neurodegenerative diseases, hemorrhage, liver disease...

The Susceptibility Mapping Group is a research group within the Division of Medical Physics in Radiology at the DKFZ. Contact and information: sina.straub@dkfz.de or